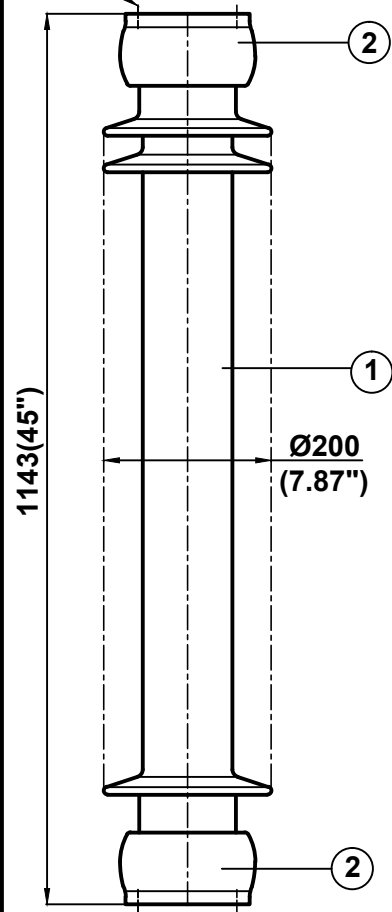


TECHNICAL PARTICULARS

4 Holes 5/8" -11UNC (0.015"Oversize)
X 0.866" deep on 5" PCD



4 Holes 5/8" -11UNC (0.015"Oversize)
X 0.866" deep on 5" PCD

MECHANICAL VALUES

Bending strength (Upright & under hung)	lb	1700	kN	7.56
Compression strength	lb	60000	kN	267
Tensile strength	lb	20000	kN	89
Torsional strength	in lb	60000	kNm	6.78

ELECTRICAL VALUES

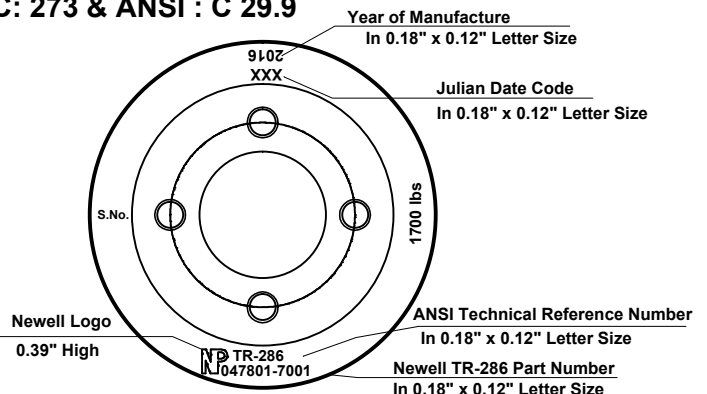
Dry power frequency withstand voltage	kV	280
Wet power frequency withstand voltage	kV	230
Dry power frequency flashover voltage	kV	305
Wet power frequency flashover voltage	kV	255
Lightning impulse withstand voltage	kVp	550
Impulse flash over voltage	kVp	610
Min. creepage distance	Inch	99 mm
Net Weight (approx.)	lbs	118.8 kgs
Shed profile as per IEC : 60815		

RADIO INFLUENCE VOLTAGE DATA

Test voltage to ground	kV	73
Max. RIV at 1000 kHz	µV	200

NOTE: -

Test & tolerance as per IS :2544 , 5350 & IEC :60168 ,
IEC: 273 & ANSI : C 29.9



Marking at top Shed

2	Caps	MCI / SGI	Hot dip galv .
1	Insulator body	Porcelain	Grey Glazed
S.No.	DESCRIPTION	MATERIAL	REMARKS

Title	Scale	Matl.
SOLIDCORE POST INSULATOR (BIL - 550 kV)	N.T.S.	See table

Ref. TR-286 47801-7001	Drawn	Kirti Nambiar
	Checked	S.K.dixit
	Approved	KR JC

All dimension are in mm.	Date	08-09-2010
--------------------------	------	------------

NEWELL PSN LLC	Drg. No.	Rev.
	212 - C - 1439	0