

TECHNICAL PARTICULARS

MECHANICAL VALUES

Bending strength (Upright & under hung)	lb	1200	kN	5.33
Compression strength	lb	60000	kN	267
Tensile strength	lb	20000	kN	89
Torsional strength	in lb	60000	kNm	6.78

ELECTRICAL VALUES

Dry power frequency withstand voltage	kV	375		
Wet power frequency withstand voltage	kV	315		
Dry power frequency flashover voltage	kV	405		
Wet power frequency flashover voltage	kV	345		
Lightning impulse withstand voltage	kVp	750		
Impulse flash over voltage	kVp	810		
Min. creepage distance	Inch	132	mm	3353
Net Weight (approx.)			kgs	68
Shed profile as per IEC : 60815				

RADIO INFLUENCE VOLTAGE DATA

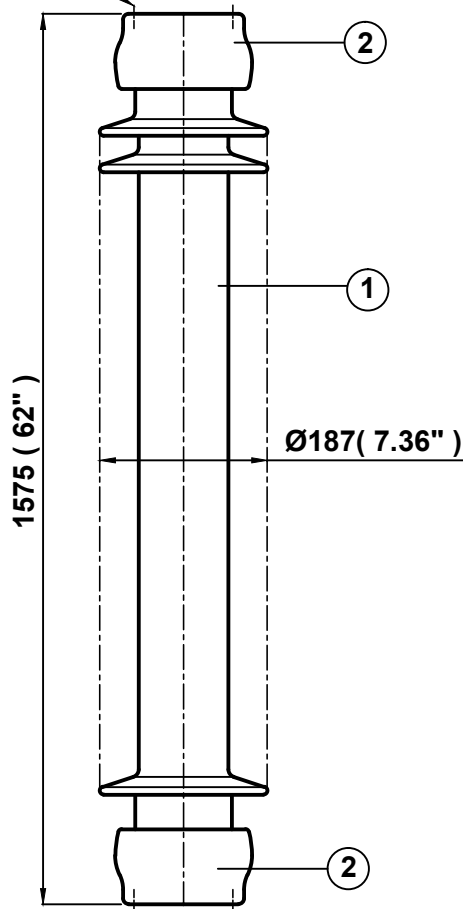
Test voltage to ground	kV	103
Max. RIV at 1000 kHz	µV	500

NOTE: -

Test & tolerance as per IS :2544 ,5350 &IEC :60168, 273 & ANSI : C 29.9

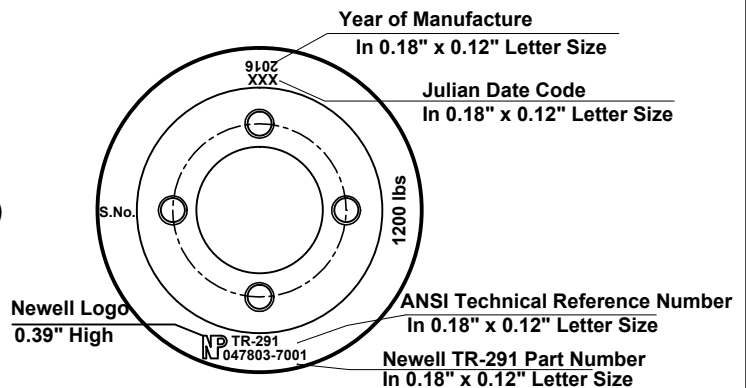
4 Holes 5/8"-11UNC(0.015"Oversize)

X0.866" deep on 5" PCD



4 Holes 5/8"-11UNC(0.015"Oversize)

X0.866" deep on 5" PCD



Marking at top shed

2	Caps	MCI / SGI	Hot dip galv .
1	Insulator body	Porcelain	Grey Glazed
S.No.	DESCRIPTION	MATERIAL	REMARKS
Title		Scale	Matl.
SOLIDCORE POST INSULATOR (BIL - 750 kV)		N.T.S.	See table
Ref.		Drawn	Kirti Nambiar
TR : 291		Checked	S.K.dixit
		Approved	KR JC
All dimension are in mm./inch.		Date	06-09-2010
NEWELL PSN LLC		Drg. No.	Rev.
		212 - C - 1441	0