

## TECHNICAL PARTICULARS

### MECHANICAL VALUES

Bending strength ( Upright & under hung )	lb	2600	kN	11.56
Compression strength	lb	75000	kN	334
Tensile strength	lb	25000	kN	111
Torsional strength	in lb	90000	kNm	10.17

### ELECTRICAL VALUES

Dry power frequency withstand voltage	kV	280
Wet power frequency withstand voltage	kV	230
Dry power frequency flashover voltage	kV	305
Wet power frequency flashover voltage	kV	255
Lightning impulse withstand voltage	kVp	550
Impulse flash over voltage	kVp	610
Min. creepage distance	Inch	99
	mm	2515
Net Weight ( approx.)	lbs	143
	kgs	65

Shed profile as per IEC : 60815

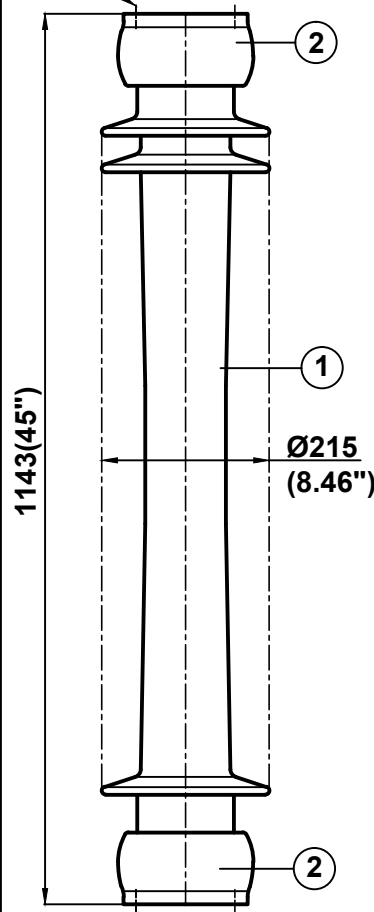
### RADIO INFLUENCE VOLTAGE DATA

Test voltage to ground	kV	73
Max. RIV at 1000 kHz	µV	200

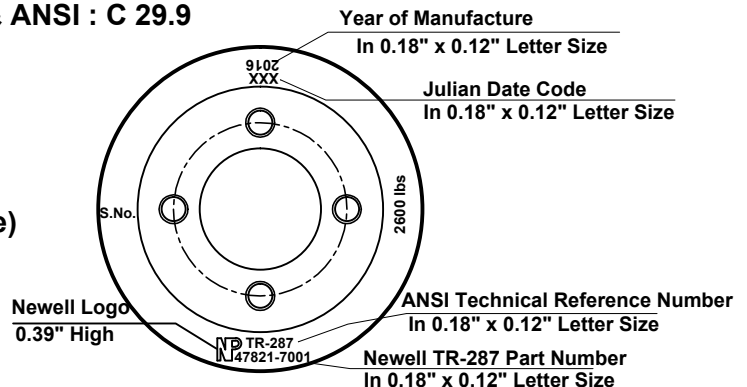
**NOTE: -**

Test & tolerance as per IS :2544 ,5350 & IEC :60168, 273  
& ANSI : C 29.9

4 Holes 5/8"-11UNC( 0.015"Oversize)  
X0.866" deep on 5" PCD



4 Holes 5/8"-11UNC( 0.015"Oversize)  
X0.866" deep on 5" PCD



**Marking at top shed**

2	Caps	MCI / SGI	Hot dip galv .
1	Insulator body	Porcelain	Grey Glazed
S.No.	DESCRIPTION	MATERIAL	REMARKS
Title		Scale	Matl.
<b>STATION POST INSULATOR</b> ( BIL - 550 kV )		N.T.S.	See table
Ref.  TR-287      47821-7001		Drawn	Kirti Nambiar
		Checked	S.K.Dixit
		Approved	KR JC
All dimension are in mm./inch		Date	26-09-2011
<b>NEWELL PSN LLC</b>		Drg. No.	Rev.
		<b>212 - C - 1471</b>	<b>0</b>