

TECHNICAL PARTICULARS

MECHANICAL VALUES

Bending strength (Upright & under hung)	lb	2000	kN	8.9
Compression strength	lb	90000	kN	400
Tensile strength	lb	25000	kN	111
Torsional strength	in lb	90000	kNm	10.2

ELECTRICAL VALUES

Dry power frequency withstand voltage	kV	375		
Wet power frequency withstand voltage	kV	315		
Dry power frequency flashover voltage	kV	405		
Wet power frequency flashover voltage	kV	345		
Lightning impulse withstand voltage	kVp	750		
Impulse flash over voltage	kVp	810		
Min. creepage distance	Inch	132	mm	3353
Net weight (approx.)			kgs	90

Shed profile as per IEC : 60815

RADIO INFLUENCE VOLTAGE DATA

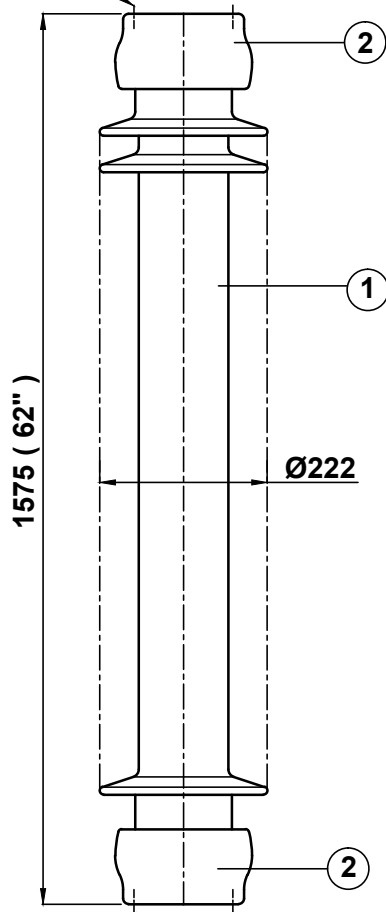
Test voltage to ground	kV	103
Max. RIV at 1000 kHz	µV	500

NOTE: -

Test & tolerance as per IS :2544 ,5350 &IEC :60168, 273 & ANSI : C 29.9

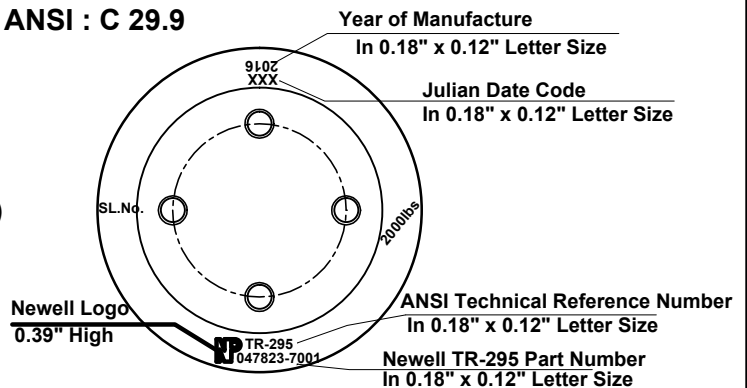
4 Holes 5/8"-11UNC(0.015"Oversize)

X0.866" deep on 5" PCD



4 Holes 5/8"-11UNC(0.015"Oversize)

X0.866" deep on 5" PCD



Marking at top shed

2	Caps	MCI / SGI	Hot dip galv .
1	Insulator body	Porcelain	Grey Glazed
S.No.	DESCRIPTION	MATERIAL	REMARKS

Title SOLIDCORE POST INSULATOR (BIL - 750 kV)		Scale N.T.S.	Matl. See table
Ref. TR : 295		Drawn	Prashant gaur
		Checked	K.R.J.C.
		Approved	J.B.A.
All dimension are in mm./inch.		Date	05-02-1998
NEWELL PSN LLC		Drg. No.	Rev.
		212 - C - 192	1

Rev. :- 1 On dated 04-10-2000