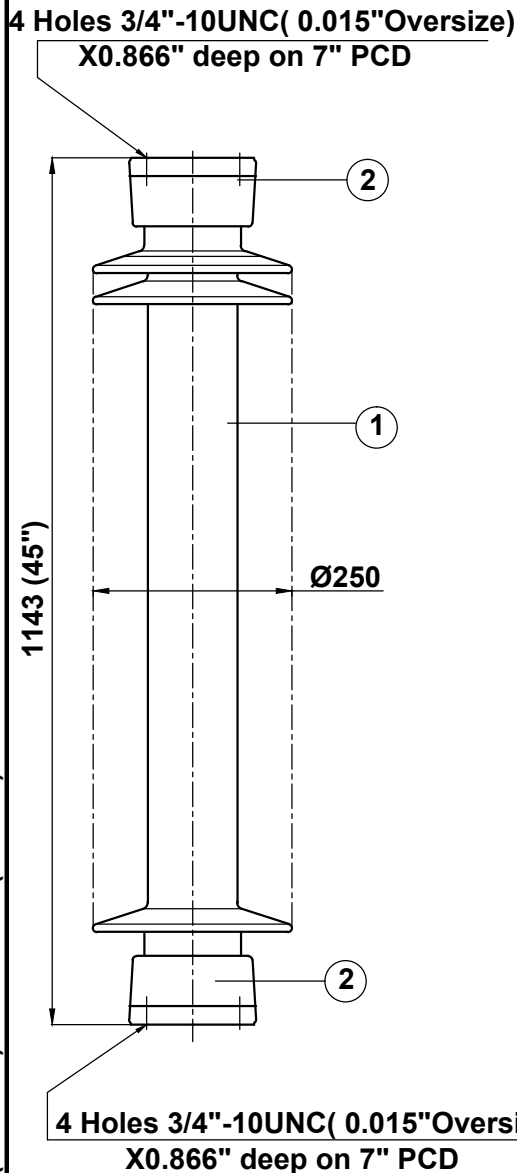


Rev.- 2 on dt. - 24-03-2012
 Design modified

Rev.- 3 on dt. - 26-03-2015
 Bending strength 5000lb (22.24kN) was 4900lb(21.8kN)



TECHNICAL PARTICULARS

MECHANICAL VALUES

Bending strength (Upright & under hung)	lb	5000	kN	22.24
Compression strength	lb	120000	kN	534
Tensile strength	lb	40000	kN	178
Torsional strength	in lb	120000	kNm	13.56

ELECTRICAL VALUES

Dry power frequency withstand voltage	kV	280		
Wet power frequency withstand voltage	kV	230		
Dry power frequency flashover voltage	kV	305		
Wet power frequency flashover voltage	kV	255		
Lightning impulse withstand voltage	kVp	550		
Impulse flash over voltage	kVp	610		
Min. creepage distance	Inch	99	mm	2515
Net Weight (approx.)			kgs	97

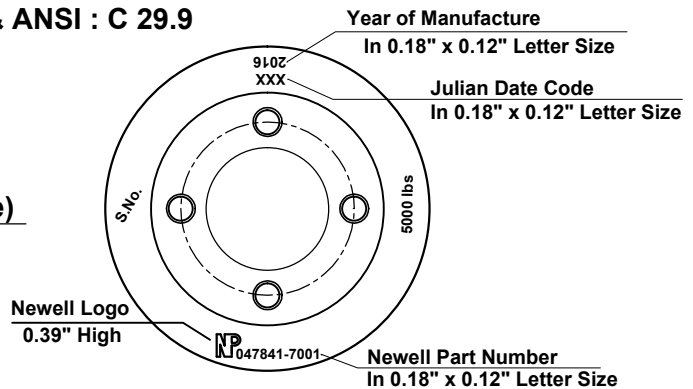
Shed profile as per IEC : 60815

RADIO INFLUENCE VOLTAGE DATA

Test voltage to ground	kV	73
Max. RIV at 1000 kHz	µV	200

NOTE: -

Test & tolerance as per IS :2544 ,5350 &IEC :60168, 273
 & ANSI : C 29.9



Marking at top shed

2	Caps	MCI / SGI	Hot dip galv .
1	Insulator body	Porcelain	Grey Glazed
S.No.	DESCRIPTION	MATERIAL	REMARKS
Title		Scale	Matl.
STATION POST INSULATOR (BIL - 550 kV)		N.T.S.	See table
		Ref.	Drawn
		Checked	S.K.Dixit
		Approved	KR JC
All dimension are in mm./inch.		Date	21 - 04 - 2010
NEWELL PSN LLC		Drg. No.	Rev.
		212 - C - 1418	3