

## TECHNICAL PARTICULARS

### MECHANICAL VALUES

Bending strength ( Upright & under hung )	lb	3500	kN	15.56
Compression strength	lb	120000	kN	534
Tensile strength	lb	40000	kN	178
Torsional strength	in lb	120000	kNm	13.56

### ELECTRICAL VALUES

Dry power frequency withstand voltage	kV	375		
Wet power frequency withstand voltage	kV	315		
Dry power frequency flashover voltage	kV	405		
Wet power frequency flashover voltage	kV	345		
Lightning impulse withstand voltage	kVp	750		
Impulse flash over voltage	kVp	810		
Min. creepage distance	Inch	132	mm	3353
Net Weight ( approx.)			kgs	122
Shed profile as per IEC : 60815				

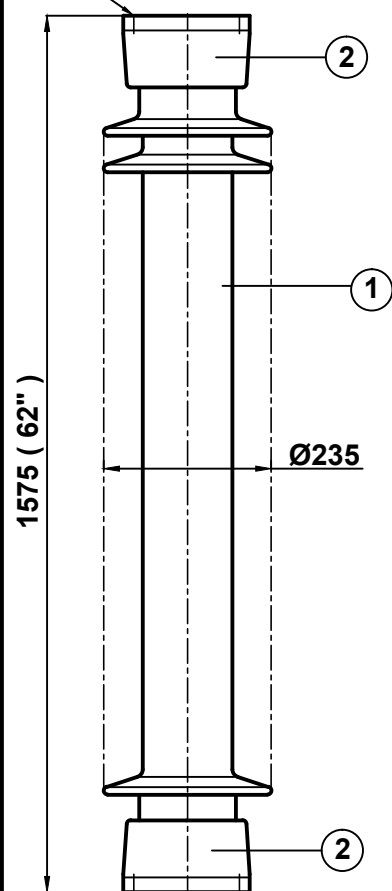
### RADIO INFLUENCE VOLTAGE DATA

Test voltage to ground	kV	103
Max. RIV at 1000 kHz	µV	500

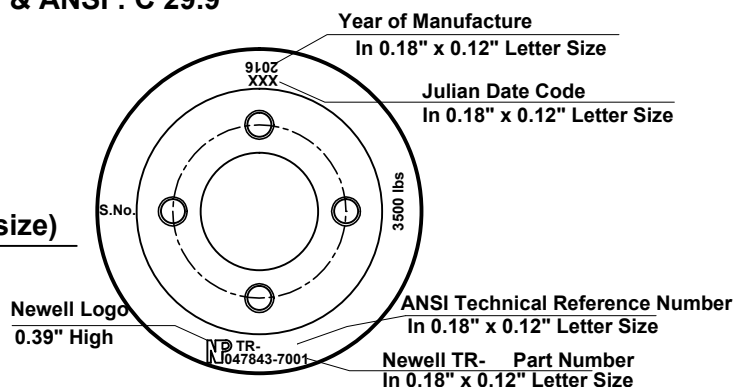
### NOTE: -

Test & tolerance as per IS :2544 ,5350 &IEC :60168, 273 & ANSI : C 29.9

4 Holes 3/4"-10UNC( 0.015"Oversize)  
X0.866" deep on 7" PCD



4 Holes 3/4"-10UNC( 0.015"Oversize)  
X0.866" deep on 7" PCD



### Marking at top shed

2	Caps	MCI / SGI	Hot dip galv .
1	Insulator body	Porcelain	Brown Glazed
S.No.	DESCRIPTION	MATERIAL	REMARKS

Title <b>SOLIDCORE POST INSULATOR</b> ( BIL - 750 kV )		Scale N.T.S.	Matl. See table
Ref. TR - 295 XHS		Drawn	Kirti Nambiar
		Checked	S.K.dixit
		Approved	KR JC
All dimension are in mm./inch.		Date	27-09-2008
<b>NEWELL PSN LLC</b>		Drg. No.	Rev.
		<b>211 - C - 1080</b>	<b>1</b>