

Technical Specification

MECHANICAL VALUES

Bending Strength: lbs/kN (Upright & Underhung)	2000/8.9
Compression Strength: lbs/kN	10000/44.5
Tension Strength: lbs/kN	8500/37.8
Torsion Strength: in.lbs/Nm	7000/790.3

ELECTRICAL VALUES

Wet Power Frequency Withstand Voltage:	kV	45
Critical Impulse Flashover Voltage POS.:	kV	125
Impulse Withstand Voltage:	kV	110
Min. Nom. Creepage Distance:	inch/mm	15.5 "/394.

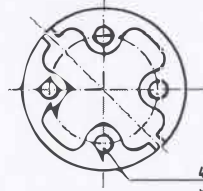
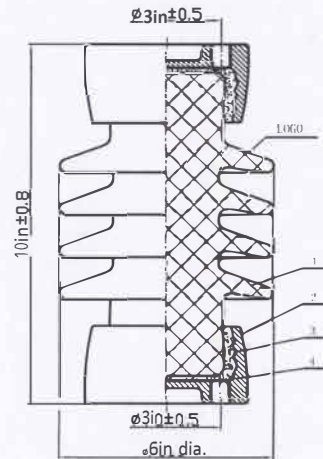
Sheld profile as per IEC60185

RADIO INFLUENCE VOLTAGE DATA

Test Voltage To Ground:	kV	10
Max. RIV At 1000kHz:	μ V	50

NOTE

Test & tolerance as per IEC:60168,273 & ANSI:C29.9



4 Holes 1/2" - 13UNC (0.015" Oversize)
x0.59" deep on 3" PCD

4	cushion	2--4	Asphalt felt
3	cement		
2	cap	2	M.C.I., hot-galvanized
1	porcelain	1	Grey Glazed
Item	Title/Name	Quantity	Note

TITLE

STATION POST INSULATOR

Ref

TR-205

All dimension are in mm.

NEWELL PSN LLC

Date

2015.6.15

Drq.NO.

231002-7001

Rev.

5