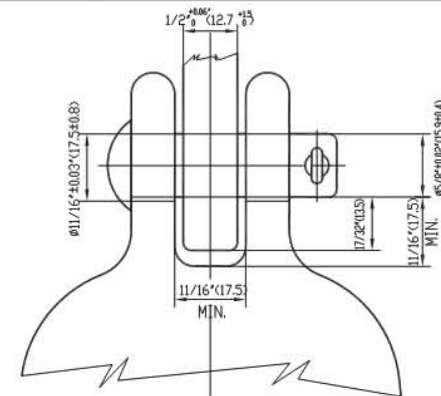


- 1.Porcelain shed
- 2.Forged steel pin
- 3.Malleable cast iron socket cap
- 4.Steel cotter pin
- 5.Stainless steel split key "R"



Combined E&M Strength: 20000lb
 Tension proof test: 10000lb
 Leakage distance, Min: 8-1/4" (<210)
 Low-freq. dry flashover min: 65kV
 Low-freq. wet flashover min: 35kV
 Critical impulse flashover positive Min: 115kV
 Critical impulse flashover negative Min: 115kV
 Low-Freq.Puncture Min: 90kV
 RIV low-freq. Test voltage:
 RMS to ground: 7.5 kV
 Max.RIV at 1000KHZ: 50^uV
 Mechanical Impact Strength: Min. 45 in-lbs

ANSI 52-2 M&E STRENGTH: 20000lb	COLOR: GRAY	
DISC PORCELAIN SUSPENSION INSULATOR	UNIT	WEIGHT
	INCH/MM	4.6 KG
2325220-7001	NEWELL PSN	